



Blackstone Close | | Plymouth | PL9 8UQ

Offers over £270,000



COPP ESTATES

WHERE YOUR NEXT CHAPTER  
BEGINS

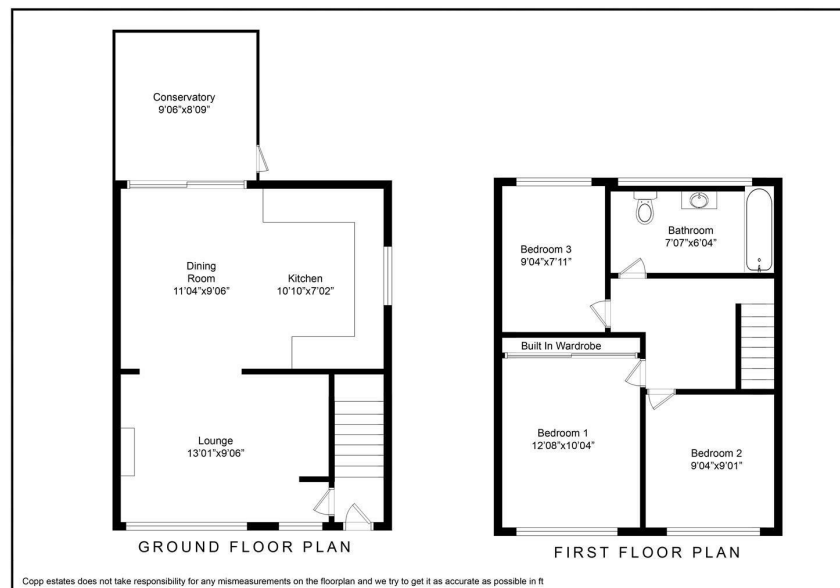


## Blackstone Close | Plymouth | PL9 8UQ Offers over £270,000

An exceptional three-bedroom semi-detached home situated in the sought-after cul-de-sac of Blackstone Close, Plymouth. Built in 1970 and immaculately maintained, this attractive property offers approximately 1,076 sq ft of well-balanced accommodation, ideal for modern family living.

The home is entered via a bright and welcoming entrance hall, leading into a spacious lounge flooded with natural light from a large double-glazed picture window. A polished limestone fireplace forms a stylish focal point, creating a warm and inviting atmosphere. The lounge flows seamlessly into a generous kitchen/dining room, perfectly suited for both everyday living and entertaining. The kitchen is fitted with contemporary white gloss units, sleek black worktops and integrated appliances, combining practicality with modern design. Sliding doors open into a delightful conservatory, providing additional living space with direct access to the garden.

- No Chain
- Modern 3 Bedroom Semi-Detached
- Small Low Maintenance Garden
- Open Plan Living
- Conservatory
- Highly Desirable Area
- Double Glazing Throughout
- Gas Central Heating



Energy Efficiency Rating		
	Current	Potential
Very energy efficient - lower running costs		
(92 plus) A		
(81-91) B		
(69-80) C		
(55-68) D		
(39-54) E		
(21-38) F		
(1-20) G		
Not energy efficient - higher running costs		
England & Wales	71	77
	EU Directive 2002/91/EC	

Drake Circus 1 Charles St  
Plymouth  
PL1 1EA  
07392818622  
tyler.copp@coppestates.co.uk  
www.coppestates.co.uk